

NYPD - TEST PREPARATION KIT

MEMORIZATION - This ability involves remembering information, such as words, numbers, pictures and procedures. Pieces of information can be remembered by themselves or with other pieces of information. Some samples of question formats using this ability follow:

Candidates are given a picture to study for a given amount of time, and then are asked questions concerning the content. The picture might be a photograph or a drawing.

Candidates are given a set of “mug shots,” which may be photographs or drawings, accompanied by descriptions and related information. Candidates must study these for a given amount of time, then are asked questions concerning the content.

Candidates are given information (e.g., directions for travel to a location, procedures to follow, operation of equipment, description of a suspect) to study for a given amount of time, then are asked questions concerning the content.

DIRECTIONS – Using a timer or your watch, carefully study the pictures and descriptions on the following page for 5 minutes. Then turn the page away from you and answer the 3 questions based solely on the material you were given.

REMEMBER – You should allow approximately 3 minutes per question, for a total of nine (9) minutes.

NYPD - TEST PREPARATION KIT



WANTED.....DRUG SALE
NAME.....JAMES WILKINSON
AGE.....21
RACE.....WHITE
HEIGHT.....6'2"
WEIGHT.....227lbs.
HAIR.....BLACK
EYES.....BROWN
COMPLEXION.....MEDIUM
SCARS / MARKS.....Tattoo on back of neck of a
"BOWLING PIN." Scar on left arm.

WANTED FOR FELONY SALE OF COCAINE. OFTEN FREQUENTS BOWLING ALLEYS
CARRIES DRUGS IN BOWLING BAG.



WANTED.....ROBBERY
NAME.....CARMELLA DIAZ
AGE.....28 - 32
RACE.....HISPANIC
HEIGHT.....5'3"
WEIGHT.....125lbs.
HAIR.....BROWN
EYES.....BROWN
COMPLEXION.....FAIR
SCARS / MARKS.....Usually wears dark glasses.
Tattoo on left arm with initials, "D.J." IN A HEART.

WANTED FOR MULTIPLE ROBBERIES. THREATENS VICTIMS WITH AN UZI MACHINE
GUN. OFTEN ACCOMPANIED BY A YOUNG MALE BLACK WHO GOES BY THE
NICKNAME "MONEY".

NYPD - TEST PREPARATION KIT

YOU MAY NOT LOOK BACK AT THE SKETCHES

Answer questions 1 through 3 on the basis of the sketches.

1. With regard to the person wanted for robbery, which one of the following choices is correct?
 - A) The person has a tattoo on the back of the neck.
 - B) The person has a scar on the left arm.
 - C) The person has a tattoo on the left arm.
 - D) The person has a scar on the back of the neck.

2. With regard to the person wanted for drug sale, which one of the following choices is correct?
 - A) The person is armed with an Uzi.
 - B) The person uses the nickname "Money."
 - C) The person has a scar on the back of the neck.
 - D) The person often frequents bowling alleys.

3. With regard to the person wanted for drug sale, which one of the following choices is correct?
 - A) The person is wearing a baseball cap.
 - B) The person has a mustache.
 - C) The person is wearing earrings.
 - D) The person is wearing sunglasses.

NYPD - TEST PREPARATION KIT

SPATIAL ORIENTATION - This ability involves determining where you are in relation to the location of some object or to tell where the object is in relation to you. Another Spatial Orientation format provides the candidates with a map (e.g., of a patrol sector). This map may include one-way streets or streets that are obstructed or unusable for some reason. The candidates are asked to identify the most efficient route to drive from one location to another, given the constraints of the situation.

4. In a classroom simulation exercise, you are practicing questioning a fellow who is playing the role of a crime victim. You are told “He pulled out a gun, and told me to hand over my wallet. Then he ran out the door of my office, and made a left turn, going north down the corridor, and then made a right turn, and ran down the stairwell. I crossed the corridor, and looked straight ahead out the window, and saw him running away from me, with his back to me, running down the street. He then made a left turn at the corner.”

According to this information, you would be most correct to radio that the perpetrator was last seen traveling:

A) North

B) South

C) East

D) West

NYPD - TEST PREPARATION KIT

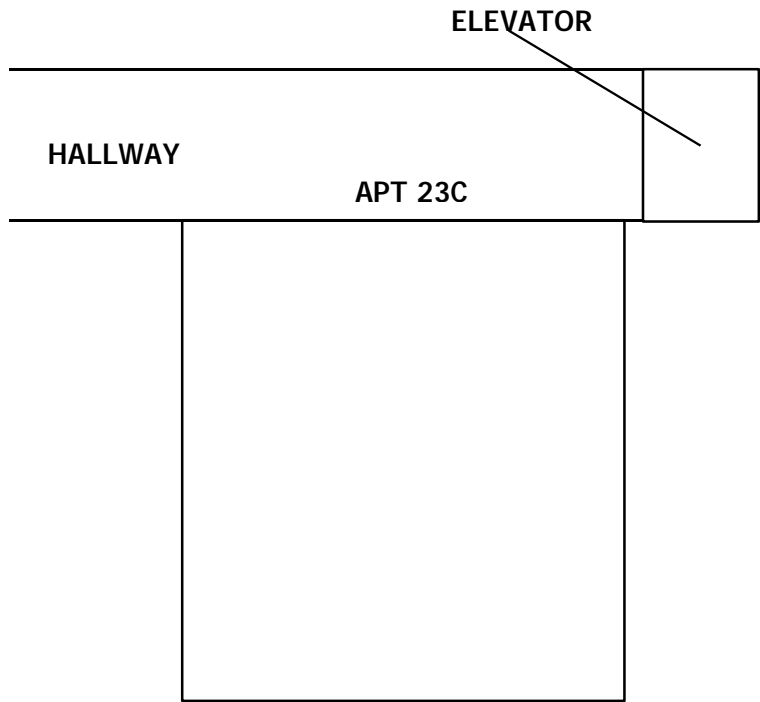
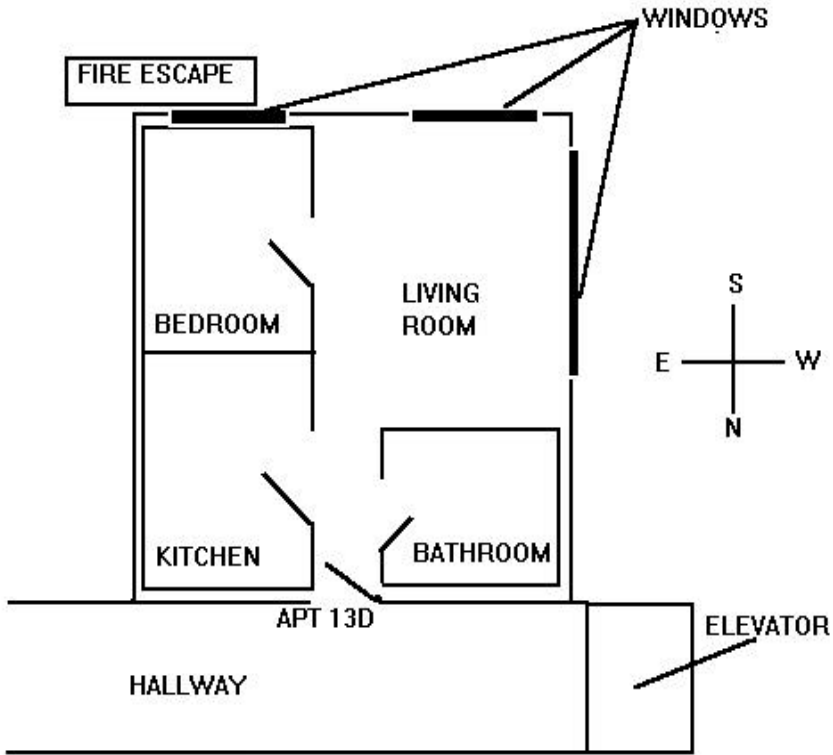
VISUALIZATION - This ability involves imagining how something would look when it is moved around or when its parts are moved or rearranged. It requires forming mental images of how patterns or objects would look after certain changes, such as unfolding or rotation. One has to predict how an object, set of objects, or patterns will appear after the changes have been carried out. Some samples of questions using this ability follow:

Another Visualization format presents the candidates with a diagram or floor plan, which may be a mirror image or some other variant of an area officers must enter (see page 6). For instance:

(Scenario)

Recruit officers are participating in a simulation exercise in which they are responding to the scene of a barricaded emotionally disturbed person in an artist's studio. The barricaded person is a performance artist who has a history of drug use and paranoid schizophrenia. He has broken into the studio of a rival artist, Suite 23C, and is threatening to kill both himself and the other artist in order to "save the world from the commercialization of art." The landlord has been able to provide a diagram of Apt. 13D, which she says is a mirror-image of Apt 23C, on the other side of the hallway corridor. Study the diagram and answer the questions.

NYPD - TEST PREPARATION KIT



NYPD - TEST PREPARATION KIT

5. Based on this diagram, if an officer were to climb down the small fire escape and enter Apt. 23C through the bedroom window, the bedroom door would be:
- A) Straight ahead
 - B) On the right
 - C) On the left
 - D) Behind the officer
6. Based on this diagram, if an officer were to enter Apt. 23C through the hallway door, the living room would be:
- A) Ahead, off the right of the officer
 - B) Ahead to the right of the officer
 - C) Ahead to the left of the officer
 - D) Behind the officer
7. The officers have the emotionally disturbed artist talking to them on the telephone. He says that he can see the officers and emergency vehicles parked in front of the building on the street from the window where he is standing. This would give you reason to believe that he is located near which wall of the building?
- A) North
 - B) South
 - C) East
 - D) West

NYPD - TEST PREPARATION KIT

WRITTEN COMPREHENSION - This ability involves understanding written sentences and paragraphs. Some examples of questions testing this ability follow:

Answer questions 8 through 10 solely on the basis of the following information:

Police Officer Tom Riggins and John Landry were patrolling in their police car in the 65th Precinct at 10:15 A.M. on December 3, 1992. They came upon the scene of a traffic accident at Avenue C and 30th Street, which had occurred five minutes earlier. Officer Landry called the Police Radio Dispatcher at 10:20 A.M. and reported that he and his partner in police car #65B were handling a traffic accident involving a van and an auto at that location. Officer Landry further reported to the dispatcher that there were no personal injuries to the van driver, or to the driver of the auto, or her two children. However, the two vehicles were damaged.

The officers checked each driver's license, vehicle registration certificate and vehicle insurance identification card. The van driver was John Hudson, age 36, residing at 1102 South Elliot Blvd., Cranford, N.J. He was driving a white 1977 GMC van, N.Y. license plate 9723GH, owned by his employer, Zenith Trucking Corp. of 257 West 63rd St., New York, N.Y. Mr. Hudson's N.J. driver's license identification number is H1385 69774 58612 and the expiration date is December 31, 1992.

The driver of the auto was Mrs. Anne Cloris, age 38, residing at 49 Christopher Avenue, Queens, New York. She had two children with her, Charles Cloris Jr., age 10, and Anita Cloris, age 8. Mrs. Cloris' auto was a red 1989 Chevrolet 4-door station wagon, NY license plate #319GAZ. Mrs. Cloris' NY driver's license identification number is 121 921 661 and the expiration date is May 31, 1994.

The officers examined both vehicles for damage from the accident and found that the van had a dented rear panel on its left side and that the auto had a dented right front fender. The officers completed a Vehicle Accident Report at 10:45 A.M. The report number was 06598004359.

NYPD - TEST PREPARATION KIT

8. Which one of the following is the correct license plate number and description of Mrs. Cloris' vehicle?
- A. NY plate #319GAZ, white 1987 Chevrolet van
 - B. NY plate #319GZA, red 1989 GMC station wagon
 - C. NY plate #319GAZ, red 1989 Chevrolet station wagon
 - D. NY plate #319GAZ, white 1989 Chevrolet van
9. At what time did the traffic accident occur?
- A. Before 10:00 A.M.
 - B. 10:10 A.M.
 - C. 10:15 A.M.
 - D. 10:20 A.M.
10. How many personal injuries resulted from the traffic accident?
- A. 0
 - B. 1
 - C. 2
 - D. 3

NYPD - TEST PREPARATION KIT

WRITTEN EXPRESSION - This ability involves using English words or sentences in writing so that others will understand. Some samples of questions using this ability follow:

11. While on patrol, Officer Wilson responds to a traffic accident. The following details were obtained at the scene:

Place of Accident: Intersection of 13th Avenue and 83rd Street
Time of Accident: 6:30 P.M.
Vehicle Involved: 1993 Buick
Driver: Elizabeth Pollock
Damage: Vehicle struck a guardrail causing a dented front fender.

Officer Wilson is completing a report of the incident. Which one of the following expresses the above information most clearly, accurately and completely?

- A) At 6:30 P.M. Elizabeth Pollock was at the intersection of 13th Ave. and 83rd Street. A 1993 Buick was involved in an accident when it struck a guardrail causing a dented front fender.
- B) A car was involved in an accident at the intersection of 13th Ave. and 83rd St. at 6:30 P.M. It struck a guardrail causing a dented front fender. Elizabeth Pollock has a 1993 Buick.
- C) A 1993 Buick driven by Elizabeth Pollock struck a guardrail at the intersection of 13th Ave. and 83rd St. at 6:30 P.M., causing a dented front fender.
- D) A 1993 Buick struck Elizabeth Pollock causing a dented front fender at the intersection of 13th Ave. and 83rd St. at 6:30 P.M.

NYPD - TEST PREPARATION KIT

A student officer is preparing a report on the specialized Bureaus within the NYPD as a homework assignment. She reviews the rough draft of her report, which contains the following two sentences:

1. The Operations Unit the Department's information gathering, storing, and disseminating unit for a wide variety of incidents including spontaneous and ongoing situations.
 2. To carry out its mission, it is necessary that the Operations Unit receive status reports concerning ongoing incidents from all Department commands.
12. Which of the following best describes the above sentences?
- A) Only sentence #1 is grammatically correct.
 - B) Only sentence #2 is grammatically correct.
 - C) Neither sentence #1 nor sentence #2 is grammatically correct.
 - D) Both sentence #1 and sentence #2 are grammatically correct.

NYPD - TEST PREPARATION KIT

INFORMATION ORDERING - This ability involves following correctly a rule or set of rules or actions in a certain order. The rule or set of rules used must be given. The things or actions to be put in order can include numbers, letters, words, pictures, procedures, sentences, and mathematical or logical operations. Some samples of questions using this ability follow:

Recruit officers in the Academy are told that if they are in a situation in which persons are being held hostage or barricaded persons will not voluntarily surrender, they should do the following in the order given:

1. Notify the Communications Division of the situation, so they can notify the patrol supervisor, Emergency Service Unit, and Operations Unit.
 2. Verify that the patrol supervisor and Emergency Service Unit are responding.
 3. Attempt to confine and isolate the subjects involved, pending arrival of the patrol supervisor and Emergency Service Unit.
 4. Maintain firearms control and establish police lines.
 5. Maintain continuous surveillance of the location, if possible. Detain witnesses for later debriefing.
13. In a role-play exercise in class, the recruit officers are given a situation in which officers respond to a barricaded person situation. They have notified the Communications Division, and have verified that the patrol supervisor and the Emergency Service Unit are responding. The next step they should take is to:
- A) Direct the Operations Unit to respond.
 - B) Attempt to confine and isolate the subjects involved.
 - C) Maintain firearms control and establish police lines.
 - D) Detain witnesses for later debriefing.

NYPD - TEST PREPARATION KIT

The instructor tells the Police Science class that when officers stop a vehicle and discover that the operator is driving with a revoked or suspended license, the following steps should be taken in the order given:

1. Confiscate the driver's license.
 2. Prepare a Seized Driver's License Receipt/Report.
 3. Give the driver the receipt for the license.
 4. Make sure the vehicle is parked legally until the registered owner of the vehicle can arrange to have the vehicle removed by a licensed operator.
 5. If the driver has two or more unrelated suspensions or his license has been revoked for any reason, arrest and transport the driver to the precinct.
14. The instructor gives the class the following example: Officers who observed a motorist driving erratically stopped him and asked to see his license and registration. The license has been revoked, although the car's registration appeared valid. What should the officers do next?
- A) Confiscate the driver's license.
 - B) Prepare a Seized Driver's License Receipt/Report.
 - C) Arrest the driver and transport him to the precinct.
 - D) Direct the driver to park the vehicle in a legal space.

NYPD - TEST PREPARATION KIT

INDUCTIVE REASONING - This ability involves combining separate pieces of information, or specific answers to problems, to form general rules or conclusions. It involves the ability to think of possible reasons for why things go together. Some samples of questions using this ability follow:

During a simulation exercise, recruits at the Academy learn that as officers, they may have cause to investigate suspected drug laboratories. In this instance, an immediate notification must be made to the desk officer of the precinct of occurrence, so that the Police Laboratory can send a chemist to the scene. Certain substances in a laboratory are highly volatile, therefore, ALL members of the service will follow these safety guidelines:

1. Ventilate the laboratory by opening doors and windows.
 2. DO NOT turn on lights or use flashlights until the area is well ventilated. If necessary to enter prior to the room being ventilated, a flashlight should be turned on BEFORE entering the area.
 3. DO NOT smoke at the scene.
 4. Use your nose. If vapors are very strong or there is any odor of bitter almonds, remain outside and await arrival of the laboratory chemist.
 5. DO NOT use department radios while inside the laboratory.
 6. DO NOT disturb flasks or containers that are being heated or cooled. Direct the attention of the chemist to such items.
 7. DO NOT allow acid and cyanide to be mixed or come together. The fumes from this mixture can cause death.
15. Based on this information, it would be most correct for the recruits to conclude that the primary concern behind these guidelines is:
- A) Proper control of evidence at a possible crime scene until a search warrant can be obtained.
 - B) Safety of the officers concerning possible explosions or exposure to fumes.
 - C) Keeping officers from accidental or intentional exposure to controlled substances (e.g. narcotics).
 - D) Preservation of confidentiality concerning the nature of the situation.

NYPD - TEST PREPARATION KIT

Answer question 16 based solely on the following information:

In a Law class in the Academy, recruit officers learn about the different types and classes of offenses covered in the Penal Law. The class is given the following information:

TYPE OF OFFENSE	CLASS OF OFFENSE	DESCRIPTION OF OFFENSE
Petit Larceny	“A” Misdemeanor	Stealing property worth up to \$1,000
Grand Larceny - 4th Degree	“E” Felony	Stealing property worth more than \$1,000
Grand Larceny - 3rd Degree	“D” Felony	Stealing property worth more than \$3,000
Grand Larceny - 2nd Degree	“C” Felony	Stealing property worth any amount of money while making a person fear injury or damage to property
Assault - 3rd Degree	“A” Misdemeanor	Injuring a person
Assault - 2nd Degree	“D” Felony	1. Seriously injuring a person; or 2. Injuring an officer of the law
Assault - 1st Degree	“B” Felony	Seriously injuring a person using a deadly or dangerous weapon
Aggravated Assault Upon Officer of the Law	“B” Felony	Using a firearm to seriously injure an officer of the law
Menacing - 3 rd Degree	“B” Misdemeanor	Making a person fear immediate serious injury
Disorderly Conduct	Violation	Making unreasonable noise

NYPD - TEST PREPARATION KIT

Robbery - 3rd Degree	“D” Felony	Stealing property by force
Robbery - 2nd Degree	“C” Felony	1. Stealing property by force with the help of another person; or 2. Stealing property by force and injuring a person
Robbery - 1st Degree	“B” Felony	Stealing property by force and serious injuring the owner of the property

16. After reviewing the above table, it would be most correct for a recruit officer to conclude that:
- A) The higher the alphabetic designation of an offense (e.g. “D” instead of “A”), the more serious it is.
 - B) The higher the degree of an offense (e.g. 3 instead of 1), the more serious it is.
 - C) Injuring a person causes a crime to automatically become a felony.
 - D) Offenses include violations, misdemeanors and felonies.
17. Student officers are participating in a simulation of exercise in which they have responded to the scene of a mugging. The victim is unconscious, but several witnesses give varying accounts of the incident. Which one of the following is most likely to be correct?
- A) “A male Asian, about 6’ 2”, 200 lbs, wearing a black jogging suit, approached the victim and began a conversation. He pointed to the telephone, handed her one dollar, and she reached into her pocketbook and took out her change purse. He then struck her in the face, and took both the change purse and her pocketbook, and fled down the stairs to the subway platform and boarded a southbound A train.”
 - B) “A male Asian, about 6’ 2”, 200 lbs., wearing a blue jogging suit, approached the victim and began a conversation. He pointed to the telephone, handed her one dollar and she reached into her pocketbook and took out her change purse. He then struck her in the face, and took both the change purse and her pocketbook, and fled down the stairs to the subway platform and boarded a northbound A train.”

NYPD - TEST PREPARATION KIT

C) “A male Asian, about 6' 5", 200 lbs., wearing a blue jogging suit, approached the victim and began a conversation. He pointed to the telephone, handed her one dollar, and she reached into her pocketbook and took out her change purse. He then struck her in the stomach, and took both the change purse and her pocketbook, and fled down the stairs to the subway platform and boarded a northbound A train.”

D) “A male Asian, about 6' 2", 200 lbs., wearing a blue jogging suit, approached the victim and began a conversation. He pointed to the telephone, handed her one dollar, and she reached into her pocketbook and took out her change purse. He then struck her in the face, and took both the change purse and her necklace, and fled down the stairs to the subway platform and boarded a northbound #3 train.”

18. Four witnesses give different accounts of the license plate of a vehicle involved in a hit-and-run accident. Which one of the following is most likely to be correct?
- A) 237AJX
 - B) 231AJX
 - C) 281AJX
 - D) 231AIX

NYPD - TEST PREPARATION

DEDUCTIVE REASONING - This ability involves applying general rules to specific problems and coming up with logical answers. It involves deciding if an answer makes sense. Some samples of questions using this ability follow:

The instructor in the Academy is preparing the class for a role-playing exercise concerning Family Offenses and domestic violence. As such problems require special treatment, it is important that officers be able to recognize these situations. The instructor provides the following information:

As defined in the Family Court Act, a family or household includes persons who:

- * Are related by blood (consanguinity)
- * Are legally married to one another
- * Were formally legally married to one another
- * Are related by marriage (affinity)
- * Have a child in common regardless of whether such persons have been married or have lived together at any time

An expanded definition of family or household includes the above, as well as persons who:

- * Are not legally married, but are currently living together in a family-type relationship
- * Are not legally married, but formerly lived together in a family-type relationship

A family/household thus includes “common-law” marriages, same sex couples, different generation of the same family, siblings and in-laws.

A family offense is any act which may constitute disorderly conduct (including acts amounting to disorderly conduct not committed in a public place), harassment, menacing, reckless endangerment, assault 2nd or 3rd degree, or attempted assault between members of the same family/household, as defined in the Family Court Act. If the offense is other than one of the foregoing, and/or the family/household relationship is NOT one defined in the Family Court Act, the offense is NOT A FAMILY OFFENSE and must be processed in Criminal Court.

NYPD - TEST PREPARATION KIT

19. The student officers are now asked to enact a role-play situation involving a family offense. According to the above information, which one of the following would be considered a family offense?
- A) Joey assaults another member of the college football team when he discovers that he “borrowed” both his car and girlfriend for the weekend.
 - B) Samantha believes that her ex-husband is not really the father of their oldest child, but has still requested that he pay child support.
 - C) Leigh makes a series of harassing midnight calls to her daughter-in-law, accusing her of being an unfit mother.
 - D) Roger brings a lawsuit against Susan, his ex-live-in-girlfriend and business partner, for patent infringement.

NYPD - TEST PREPARATION KIT

PROBLEM SENSITIVITY - This ability involves being able to tell when something is wrong or is likely to go wrong. It includes being able to identify the whole problem as well as elements of the problem. Some samples of questions using this ability follow:

20. During field training, Recruit Officer Washington is assisting at the scene of an explosion. She has been assigned to crowd control while firefighters and emergency medical personnel are at work. Several persons try to move forward past the perimeter line she has established and must maintain. When she asks them to step back, they say that as citizens, it is their duty to help in civic emergencies. Which one of the following things would be best for her to say to avoid problems?
- A) “If you don’t get out of here immediately, I am going to arrest all of you.”
 - B) “Deadly asbestos and gasses are in this area. Get out quickly. NOW!”
 - C) “Help me by moving back, and telling the other people to keep walking.”
 - D) “We don’t need help from untrained persons. You’re more dangerous than useful.”
21. Recruit officers in the Academy are told that they should never use their radios at the scene of a possible bomb. It would be most correct for the recruits to conclude that the primary concern behind this rule is that use of radios could:
- A) Tip off the press, whose presence could cause additional problems.
 - B) Cause a panic among persons who have not yet been evacuated from the premises.
 - C) Trigger the premature detonation of the explosive device.
 - D) Block other important transmissions on the frequency.

NYPD - TEST PREPARATION KIT

NUMBER FACILITY - This ability involves adding, subtracting, multiplying and dividing quickly and correctly. Some samples of questions using this ability follow:

22. In physical training class, Student Officer Chan completed the mile and a half run in 15 minutes. What is this speed in miles per hour?

- A) 3.75 B) 6 C) 16.666 D) 22.5

The recruit officers are told by their Social Sciences instructor that the quizzes they take in class are an important part of their evaluation. Since the quizzes are of different length, they vary in their importance. However, the recruit officers are told that they must have correctly answered 70% of their total classroom quiz questions in order to pass the course. The members of Recruit Officer Chan's study group have obtained the following scores:

Recruit Officer	Quiz 1 Score 20 questions total	Quiz 2 Score 45 questions total	Quiz 3 Score 15 questions total	Quiz 4 Score 20 questions total	Quiz 5 Score 50 questions total
Chan	15 correct	35 correct	13 correct	19 correct	44 correct
Fox	12 correct	34 correct	10 correct	15 correct	33 correct
Monzetti	18 correct	38 correct	14 correct	13 correct	38 correct
Vole	16 correct	40 correct	11 correct	17 correct	40 correct

23. Which one of the following recruit officers is most likely to fail the Social Science course due to low scores on quizzes?

- A) Chan B) Fox C) Monzetti D) Vole

NYPD - TEST PREPARATION KIT

MATHEMATICAL REASONING - This ability involves being able to reason abstractly using quantitative concepts and symbols. It includes reasoning through mathematical problems in order to determine appropriate operations that can be performed to solve them.

24. Police Officer Thomas O'Toole is assigned to verify that all the equipment assigned to the Coney Island detail is still on hand. Officer O'Toole counts the following property:

<u>Quantity</u>	<u>Item</u>
23	Barriers
15	Portable Radios
2	3 Wheel Scooters
3	2 Wheel Scooters
1	Portable Telephone

Officer O'Toole is required to make an entry in his memo book regarding the total number of items he has counted. Which one of the following formulas would Officer O'Toole be correct to use?

- A) $23+15+2(3)+3(3)+1$
 - B) $23+15+3+1$
 - C) $23+15+2+3+1$
 - D) $23+15+2+3+3+2+1$
25. Police Officer Sam Jackson has arrested Bill Gorman for burglary. The following is a list of currency Mr. Gorman possessed at the time of his arrest.

<u>Denomination</u>	<u>Number Possessed</u>
\$1	12
\$5	4
\$10	5
\$20	12

Officer Jackson must count the money and inform the desk officer of the total amount of money taken from the suspect. Which one of the following formulas should Officer Jackson use to correctly calculate the total amount?

- A) $\$1+12+\$5+4+\$10+5+\$20+12$
- B) $12+4+5+12$
- C) $\$12+\$5(4)+\$10(5)+\$20(12)$
- D) $\$1+\$5+\$10+\20

NYPD – TEST PREPARATION KIT

26. Officer Karen Campisi issued the following summonses during a four week period.

<u>Week Number</u>	<u>Moving Summonses</u>	<u>Parking Summonses</u>
1	12	24
2	11	36
3	8	40
4	13	28

Officer Campisi is required to list the total number of summonses in her Activity-Log at the end of the four week period. Which one of the following formulas will provide an accurate amount of summonses issued.

- A) $1(12+24) + 2(11+36) + 3(8+40) + 4(13+28)$
- B) $12 + 11 + 8 + 13 + 24 + 36 + 40 + 28$
- C) $12 + 11 + 8 + 13$
- D) $24 + 36 + 40 + 28$

NYPD – TEST PREPARATION KIT

ANSWERS

- | | | | |
|-----|---|-----|---|
| 1. | C | 14. | A |
| 2. | D | 15. | B |
| 3. | B | 16. | D |
| 4. | A | 17. | B |
| 5. | B | 18. | B |
| 6. | C | 19. | C |
| 7. | A | 20. | C |
| 8. | C | 21. | C |
| 9. | B | 22. | B |
| 10. | A | 23. | B |
| 11. | C | 24. | C |
| 12. | B | 25. | C |
| 13. | B | 26. | B |